

# Northwest Rural Public Power District

Hay Springs, NE 69347

January 2023

## Childhood Memories Inspiration for Christmas Display

If you drive between Rushville and Hay Springs during the Christmas season you will note a brilliant glow off the north side of the highway about half way. Jay and Mary Thies have been lighting up the area for the past 22 years.

"Clark Griswold was my inspiration to start this exterior illumination thing and keeps me motivated each year to get out there and put those lights up!" explained Jay Thies, a Hay Springs native who has been a Nebraska Public Power lineman the past 34 years. His wife of 34 years is a Gordon High graduate and has been employed by the Gordon-Rushville Public Schools for 25 years. The Thieses have one son, Jackson, 20, who attends the University of Nebraska at Lincoln.

Jay starts putting the lights up two weeks before Thanksgiving. "It usually takes me about 12 days, six hours a day average to get them all up and about half that time to take them down," explained Thies. "I don't have any idea how many strings of lights there are, but I do know it takes about a half mile of extension cords to light them up." Mary and his oldest brother Jeff, who lives north of Hay Springs, join in helping get the display together.

He decorates the house and one barn. Most of the lights are on the trees around the place. "I don't have any particular themes, but I do put up just about every color of light there is," he added.



Jay and Mary Thies have lived between Hay Springs and Rushville for 26 years, 22 of which they have been decorating their yard for Christmas.

"My favorite part of the display are the old fashion C-9 ceramic lights, especially when there is a layer of snow on them (they seem to glow under the snow). There are a few handmade decorations that were resurrected from the garbage dump. This includes a Christmas tree made out of cans, a large metal star, and the Keep Christ in Christmas (Continued on Page 2)





## Thies Christmas Display--

(Continued from Page 1)

sign. All were refurbished and brought back to life," noted Thies.

"The Grinch showed up about eight years ago and occasionally the Abominable Snowman has also made a few appearances in the last eight years."

"I have been asked many times why I go to all the work. I just remember when I was a kid and my parents would take me out to the Kearns place east of Rushville and how amazing the lights were (you even got to go inside the house and look at all the decorations) and in later years the Abold Display and Melvin and Kathy Barth's display, great memories and it was something I looked forward to each year," said Thies. "Who doesn't love the bright, shiny lights and maybe it helps get people in the Christmas Spirit."

"My light bill does go up a (little) each December. Since we have lived here the REA has replaced our transformer from a 15kva, to a 25kva, and finally to a 50kva. NRPPD employee Brad Johnson told him,



**This vintage Christmas piece was rescued from the dumpster in Rushville. It is one of several pieces that Thies has rescued from the dump.... one man's trash is another's treasure!**



**Visitors are often greeted by the Grinch and Abominable Snowman on Friday and Saturday nights for a few hours. They are pictured with the adorable snowflakes Jay made out of pallets.**

"That's it no more lights! ' . "Worth every penny though and happy to contribute to the REA's retirement plan," he chuckled.

The Thies display is up until about the end of December. "We have had several people drive out each year. Some just drive up the county road and look and others will drive through the yard. The last two weekends prior to Christmas is the busiest time," noted Thies. He also mentioned they often find tokens of appreciation on the tractor seat out front which have included cookies, beverages and even some scratch tickets.

In addition to their display, Jay gets involved in putting up lights in area towns while working for NPPD. He is also part of the Hay Springs Lighting Committee who decorate the town and sponsor a Christmas Lighting Celebration and parade the Friday after Thanksgiving each year.



**Burkinshaw  
Fencing, LLC**

Ryan Burkinshaw  
(605) 430-3912  
Hay Springs, Nebraska

- Farm/Ranch • Temporary Construction
  - Commercial • Residential
- Licensed & Insured--

Central Office  
218 S. Gibson  
Hay Springs

**1-800-752-9584**

(308) 638-4432

www.westplainsco.com



**WESTPLAINS  
L.L.C.**

## Five Winter Energy Saving Tips

### 1. Reset Your Water Heater Thermostat

After heating and cooling systems, water heaters are the second highest source of energy usage in the home. It takes a lot of energy to heat water, and most people have the thermostat on their water heater set way too high.

Your water heater heats water to a set temperature, then maintains that temperature 24/7. That means that your water heater just cycles on and off, continually reheating water to that temperature, whether you use it or not. Just setting the temperature on your water heater a few degrees cooler can save you a couple dollars on your energy bills. Unless you're in the habit of taking showers at skin-scalding temperatures, you likely won't even notice the difference.

### 2. Keep the Air Circulating

Everyone knows that ceiling fans are a great way to stay cool in the summer, but did you know that they can also help keep you warm in winter?

Normally, ceiling fans rotate counterclockwise, pushing air down and producing a slight wind chill effect, allowing you to feel cooler. However, most ceiling fans have a reverse switch that will enable them to turn clockwise, producing an updraft and moving the warm air that collects near your ceiling down into the rest of the room.

### 3. Use Space Heaters

If you only need to heat a small area, try using a space heater. Electric space heaters are a very energy efficient way to

stay warm because there is no heat loss through ducts or combustion. Space heaters are excellent for heating closed-off areas that you only occupy for shorter periods, like your garage or that bathroom that's always colder than every other room in the house for some reason. However, when it comes to heating your entire house, space heaters are less efficient than a natural gas furnace or a heat pump.

### 4. Choose LED Lights for Your Home and Decorations

If you're planning an elaborate Christmas light show this holiday season, consider using LED lights. LED lights are the most energy-efficient lighting option currently available. They use 75 percent less energy than standard incandescent lights and last 25 times longer. You'll have to spend a little more up front, but LEDs are so durable and long-lasting that your grandchildren could be using the very same string of lights 40 Christmases from now. They use so little electricity that 25 strings of holiday LEDs can be connected end-to-end without overloading a standard wall socket.[2]

### 5. After Using the Oven, Leave the Door Ajar

Heating your home entirely with your oven would be an impractical waste of energy. However, if you're using it anyway, there's no sense in letting that heat go to waste. After taking dinner out of the oven, leave the door cracked open and allow that extra heat to escape and warm your kitchen.

## WRECK-A-MENDED BODY WORKS

Free Estimates • Custom Painting

**(308) 282-2005**

Steve & Valli Petersen  
701 South Main • Gordon

## RANCHO DELUXE GUNS & AMMO

BUY - SELL - TRADE

JF & Cathy Policky

Chadron • 3 Miles West on Hwy. 20

**(308) 660-4682**

Before Selling or Buying  
Farm, Ranch or Land, Call:



Phillip Rosfeld  
Broker

Western View  
Real Estate

269 Main Street Chadron, NE

308-432-6828

[www.WesternViewRealEstate.com](http://www.WesternViewRealEstate.com)

## BEGUIN PROPANE

Propane Delivery  
Tank Rentals & Sales

Ask About Our  
"KEEP FULL PROGRAM"

Robbie Beguin, Owner **(308) 360-3579**

Hwy. 20 & 280th Lane - Gordon

[beguinpropane@gpcom.net](mailto:beguinpropane@gpcom.net)





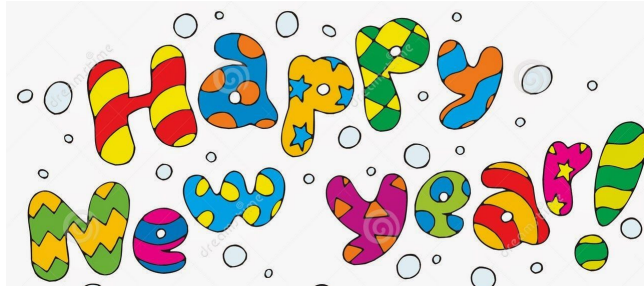
**If the lights go out momentarily, your auto-restart equipment will restart the well and this could be you!**

Northwest Rural recommends that all disconnects on your irrigation system be shut off during the off-season. Temperature shutdown safeguards may protect you “providing they work”.

Shutting your system off is the only truly dependable safeguard. This will prevent systems equipped with auto-restart switches from inadvertently starting should a bump or surge occur on the main power line. Besides preventing unwanted system startup, this may also prevent electrical equipment damage.

## Northwest Seeks Board Member for Sub-District 3

Anyone residing in sub-district 3 with an interest in the Board of Director vacancy may submit a letter of interest including a short biography no later than January 23rd, 2023. Northwest Rural Public Power District, 5613 Highway 87, P.O. Box 249, Hay Springs, NE 69347. Attention Chance Briscoe, General Manager. Eligibility requirements: Must reside in Sub-District 3 and receive electrical service from Northwest Rural Public Power District. Sub-District 3 is composed and consists of the following voting precincts within the County of Sheridan; Hay Springs, North Rushville, South Rushville and Mirage. Sub-District excludes the City of Hay Springs and Rushville.





**Ted Baseggio**  
Sales Associate for Rhonda Baseggio  
123 N. Main St. | Hay Springs  
(308) 638-4566  
Theodore.Baseggio@fbfs.com



**FARM BUREAU FINANCIAL SERVICES**

Auto | Home | Life | Annuities | Business | Farm & Ranch

Securities & services offered through FBL Marketing Services, LLC+, 5400 University Ave., West Des Moines, IA 50266, 877/860-2904, Member SIPC. Farm Bureau Property & Casualty Insurance Company. \*\* Western Agricultural Insurance Company. \*\* Farm Bureau Life Insurance Company. \*\* West Des Moines, IA. \*Affiliates \*Company providers of Farm Bureau Financial Services M191 (4-19)

**C.R. Packing, LLC**



**Open Mon-Fri.**  
7 a.m.-5 p.m.  
**Closed**  
**Wednesdays**

**Owners**  
**Cheriee Kershaw**  
**& Ryan Gehrt**

**308-282-0090 • Clinton**

Visit Our Facebook Page at CR Packing  
c.r.packing@outlook.com

## Young's Repair, Inc.

Major to Minor Mechanical Work  
**Tractors, Truck & Car Repair**

- Vehicle & Farm Tires • Batteries
- Oil • Grease • Bolts

SERVICE CALLS • HAULING  
**308-638-7443**

5631 Hwy. 87 • Hay Springs  
youngrepairinc@gpcom.net





**HAIL DAMAGED**  
**ROOF?**

Call  
**308-360-1049**

224 N. Gibson  
Hay Springs

**INSURED • LOCAL REFERENCES**  
*Free Estimates - Insurance Claims*


# ***Find Something to Celebrate in January!***

- Jan. 1:** Apple Gifting Day, Commitment Day, Copyright Law Day, Bloody Mary Day, National Hangover Day, New Year's Day.
- Jan. 2:** National Buffet Day, Ancestry Day, Cream Puff Day, National Personal Trainer Awareness Day, Swiss Cheese Day.
- Jan. 3:** Fruitcake Toss Day, Festival of Sleep Day, Chocolate Covered Cherry Day, National Write to Congress Day.
- Jan. 4:** National Missouri Day, Spaghetti Day, National Trivia Day, Pop Music Chart Day, Weigh-In day, Hypnotism Day.
- Jan. 5:** National Bird Day, Keto Day, Whipped Cream Day, National Screen Writer's Day, Harbin Ice Festival.
- Jan. 6:** Dry Bean Day, National Cuddle Up Day, Shortbread Day, National Take Down the Christmas Tree Day, Smith Day.
- Jan. 7:** Harlem Globetrotter's Day, National Pass Gas Day!, Bobblehead Day, I'm Not Going to Take It Anymore Day.
- Jan. 8:** National Bubble Bath Day, Earth's Rotation Day, Argyle Day, Man Watcher's Day, World Typing Day, Pizza Week.
- Jan. 9:** National Apricot Day, Clean Your Desk Day, National Static Electricity Day, National WONK Day, World Nerd Day.
- Jan. 10:** National Cut Your Energy Costs Day, Save the Eagles Day, Peculiar People Day, Shop for Travel Day.
- Jan. 11:** National Arkansas Day, Girl Hug Boy Day, National Hot Toddy Day, Milk Day, National Take the Stairs Day.
- Jan. 12:** Feast of Fabulous Wild Men Day, Healthy Weight, Healthy Look Day, Kiss a Ginger Day, Hot Tea Day.
- Jan. 13:** Make Your Dream Come True Day, National Blame Someone Else Day, Public Radio Broadcasting Day.
- Jan. 14:** Cesarean Section Day, National Dress Your Pet Up Day, Hot Pastrami Sandwich Day, Organize Your Home Day.
- Jan. 15:** National Bagel Day, Fresh Squeezed Juice Day, Pot Hole Day, World Snow Day, Healthy Weight Week.
- Jan. 16:** Appreciate a Dragon Day, Blue Monday, Civil Rights Day, Martin Luther King Jr. Day, Boston Day, Fig Newton Day.
- Jan. 17:** Benjamin Franklin Day, Customer Service Day, Kid Inventor's Day, Printing Ink Day, Popeye Day.
- Jan. 18:** National Gourmet Coffee Day, Michigan Day, Winnie the Pooh Day, Museum Selfie Day, Weedless Wednesday.
- Jan. 19:** Brew a Potion Day, Get to Know Your Customer's Day, Gun Appreciation Day, Popcorn Day, Robert E. Lee Day.
- Jan. 20:** International Day of Acceptance, Cheese Lover's Day, National DJ Day, Penguin Awareness Day, Judy Day.
- Jan. 21:** Grandma's Day, International Sweatpants Day, Granola Bar Day, National Hug Your Puppy Day, Soup Swap Day.
- Jan. 22:** Chinese Lunar New Year's Day, Chinese New Year, Grandpa's Day, National Hot Sauce Day, Polka Dot Day.
- Jan. 23:** Measure Your Feet Day, Handwriting Day, National Pie Day, Farmhouse Breakfast Week, Concertalk Week.
- Jan. 24:** Change a Pet's Life Day, International Day of Education, Macintosh Computer Day, "Just Do It" Day.
- Jan. 25:** National Fish Taco Day, Irish Coffee Day, IV Nurse Day, Observe the Weather Day, Opposite Day.
- Jan. 26:** Australia Day, Clashing Clothes Day, International Environmental Education Day, Spouse's Day.
- Jan. 27:** National Chocolate Cake Day, Geographic Day, Fun at Work Day, Holocaust Memorial Day.
- Jan. 28:** National Blueberry Pancake Day, Daisy Day, Kazoo Day, Lego Day, Rattlesnake Roundup Day.
- Jan. 29:** Freethinkers Day, Kansas Day, Corn Chip Day, National Puzzle Day, Seeing-Eye Guide Dog, Meat Week.
- Jan. 30:** National Bible Day, National Draw a Dinosaur Day, Croissant Day, Yodel for Your Neighbors Day.
- Jan. 31:** Appreciate Your Social Security Check Day, Zebra Day, Grammy Awards Day, Plan For Vacation Day.


**Northwest Rural P.P.D.**

**Working with you to stay safe.**

**CHADRON**  
CHRYSLER DODGE Jeep RAM  
**POLARIS**  
**OF CHADRON**

*can-am* 

**GMC**  
**OF CHADRON**

 **Bobcat**  
**OF CHADRON**

**KIOTI**  
TRACTOR

**WWW.CHADRONMOTORS.COM**

# Northwest Rural Territory Activities

## Gordon-Rushville Mustangs

**Thurs., Jan. 5** School Resumes  
**Fri., Jan. 6** GBB (JV-V) vs. Valentine, 5 p.m.  
**Sat., Jan. 7** G-B BB (JV-V) vs. Bayard, 1:30 p.m.  
**Mon., Jan. 9** School Board Meeting  
**Tues., Jan. 10** G-B BB (JV-V) at Hay Springs, 5:30, 6:30 p.m.  
**Thurs., Jan. 12** WR (JV-V) Quad at Bennett Co., 4 p.m.  
**Fri., Jan. 13** G-B BB (JV-V) at Gering, 2:30 p.m.  
**Sat., Jan. 14** G-B BB (JV-V) vs. Kimball, 1 p.m.  
**Tues., Jan. 17** G-B BB (JV-V) vs. Alliance, 2 p.m.  
**Fri., Jan. 20** G-B BB (JV-V) vs. Mullen, 2 p.m.  
**Sat., Jan. 21** WR (V) at CSC, 9 a.m.  
**G-B BB (JV-V) vs. Chadron, 2 p.m.**  
**Mon., Jan. 23** BBB (MS) vs. Bayard  
**Tues., Jan. 24** BBB (MS) at St. Agnes, 3 p.m.  
**Fri., Jan. 27** WR (V) at Ord, 10 a.m. MST  
**G-B BB (JV-V) vs. Morrill, 2 p.m.**  
**Sat., Jan. 28** WR (V) at Boone Central, 9 a.m. MST  
**BBB (MS) at Valentine Invite, 8 a.m.**  
**G-B BB (JV-V) at Mitchell, 12 p.m.**  
**Mon., Jan. 30** BBB (MS) vs. Chadron, 3 p.m.  
**G-B BB (C) at Valentine, 4 p.m.**  
**Tues., Jan. 31** BBB (MS) vs. Hay Springs, 3 p.m.  
**Feb. 2-4** G-B BB WTC at WNCC  
**Thurs., Feb. 2** WR WTC Invite at Bridgeport, 9 a.m.  
**Sat., Feb. 4** WR (V) at Black Hills Classic, 9 a.m.  
**Mon., Feb. 6** BBB (MS) at Bennett Count, 3:30 p.m.  
**Tues., Feb. 7** BBB (MS) at Valentine, 3 p.m.

**Wed., Feb. 8** WTC Speech -GR  
**Thurs., Feb. 9** BBB (MS) vs. Cody-Kilgore, 3 p.m.  
**Feb. 10-11** District Wrestling, tba  
**Fri., Feb. 10** G-B BB (JV-V) at Bridgeport, 2:30 p.m.

## Crawford Rams

**Wed., Jan. 4** School Resumes  
**Thurs., Jan. 5** G-B BB (JV-V) at Edgemont, 4 p.m.  
**Sat., Jan. 7** G-B BB at Morrill, 1 p.m.  
**WR at Garden County**  
**Mon., Jan. 9** School Board Meeting, 6 p.m.  
**Tues., Jan. 10** BB (JH) at Hemingford, 5 p.m.  
**Thurs., Jan. 12** G-B BB (JV-V) vs. Guernsey, 5 p.m.  
**Fri., Jan. 13** G-B BB (JV-V) at Hyannis, 5 p.m.  
**Sat., Jan. 14** BBB (JH) vs. Sioux County, 9 a.m.  
**Mon., Jan. 16** BBB (JH) at Edgemont, 3 p.m.  
**Sat., Jan. 21** WR at CSC, 9 a.m.  
**Tues., Jan. 24** BBB (JH) vs. Hay Springs, 3 p.m.  
**G BB (JV-V) at Hemingford, 6 p.m.**  
**BBB (JH) at St. Agnes, 4:30 p.m.**  
**Thurs., Jan. 26** WR at Mitchell, 9 a.m.  
**Sat., Jan. 28** BBB (JH) at St. Agnes Tourney, 9 a.m.  
**Mon., Jan. 30** WR at Bridgeport, 9 a.m.  
**Thurs., Feb. 2** G-BB BB (JV-V) at Cody-Kilgore, 4 p.m.  
**Fri., Feb. 3** G-B BB (JV-V) vs. Lingle Ft. Laramie, 3 p.m.  
**Sat., Feb. 4** BBB (JH) at Hay Springs, 3 p.m.  
**Mon., Feb. 6** BBB (JH) at Sioux County, 2 p.m.  
**Tues., Feb. 7** G-B BB (JV-V) at Sioux County, 3 p.m.

# DAVIS Repair



## Tractor & Farm Equipment Repair

*Specializing in John Deere*  
*Roller Chain • Baler Belting - Guards & Sickle Sections*  
**Nathan Davis, Owner**  
 212 N. Scott • Hay Springs • (308) 430-2615

# Farmer's Co-op



- Feed
- Grain
- Fertilizer
- Chemical & Animal Health Care

Knowledge • Commitment • Success

**Hemingford • Hay Springs • Gordon**  
**308-487-3317 - www.farmcoop.com**

1520 West 6th Street  
 Chadron, NE 69337

Phone  
 308-432-3221

# Quality TIRE

**On Farm  
Tire  
Repair!**

# Tommy's

Chadron, NE CAR LOT

JAMIE ROES  
 JERRY PIERCE

**920 E. Third - Chadron**  
**Toll Free: 1-888-363-3636 • 432-3636**

[www.tommyscarlot.com](http://www.tommyscarlot.com)  
[tommyscarlot@hotmail.com](mailto:tommyscarlot@hotmail.com)



# NORTHWEST RURAL ACTIVITIES

**Thurs., Feb. 9** G-B BB (JV-V) vs. Hay Springs, 4 p.m.  
Feb. 10-11 District Wrestling, tba

## Hemingford Bobcats

Mon., Jan. 2 G-B BB (JV-V) at Niobrara County,  
1, 2:30, 4, 5:30 p.m.  
Thurs., Jan. 5 G-B BB (JV-V) at Garden County,  
3, 4:30, 6, 7:30 p.m.  
Fri., Jan. 6 **B BB (JV-V) vs. Minatare, 4:30, 7:30 p.m.**  
**G BB (V) vs. Creek Valley, 6 p.m.**  
**WR (V) vs. Hay Springs, 6 p.m.**  
Sat., Jan. 7 G-B WR at Garden County Invite, 9 a.m.  
**Mon., Jan. 9 School Board Meeting, 5 p.m.**  
Tues., Jan. 10 G-B WR (JV-V) at Chadron, 3, 4:30, 5, 6 p.m.  
Wed., Jan. 11 FFA Contest, 9:30 a.m.  
**FCCLA Big Brother/Big Sister Activity, p.m.**  
Fri., Jan. 13 **G-B BB (JV-V) vs. Bayard, 3, 4:30, 6, 7:30**  
WR (V) at Hyannis Invite, 5 p.m.  
Sat., Jan. 14 WR (V) at Sandhills-Thedford Invite, 9 a.m.  
**BBB (JH) vs. Hay Springs, 10 a.m.**  
BBB (JV-V) at Sioux County  
Jan. 16-20 G-B BB PanCo, tba  
Thurs., Jan. 19 BBB (JH) at Hemingford, 4 p.m.  
Fri., Jan. 20 **WR G-B Hemingford Invite, 11 a.m.**  
Mon., Jan. 23 BBB (JH) at Morrill, 4 p.m.  
Tues., Jan. 24 WR at Bennett County  
**G BB (JV-V) vs. Crawford, 5:30, 7 p.m.**  
Wed., Jan. 25 FCCLA Dist. STAR Competition at Garden Co.  
Thurs., Jan. 26 WR at Bayard Invite, 4 p.m.  
G-BB (JV-V) at Leyton, 5, 6:30 p.m.

Fri., Jan. 27 WR at Mitchell Invite  
Sat., Jan. 28 FFA State degree interview  
**G-B BB (JV-V) vs. Edgemont, 1,2:30, 4, 6 pm**  
Mon., Jan. 29 BBB (JH) PanCo, tba  
Wed., Feb. 1 FFA Ag Mech, Farm & Ranch Management  
Contest, 9 a.m.  
Thurs., Feb. 2 WR at Bridgeport  
Feb. 2-4 G-BB BB (V) WTC, tba  
**Mon., Feb. 6 BBB (JH) vs. St. Agnes, 4:30 p.m.**  
**Tues., Feb. 7 G-B BB (JV-V) vs. Morill, 3, 4:30, 6, 7:30 p.m.**  
Thurs., Feb. 9 BBB (JH) at Alliance, 4 p.m.  
Feb. 10-11 District Wrestling, tba  
Fri., Feb. 10 **G-B BB (JV-V) vs. Kimball, 3, 4:30, 6, 7 p.m.**  
**BB Parents Night**

## Chadron Cardinals

Tues., Jan. 3 G-B BB (C-JV-V) at Hot Springs -  
3, 3:30, 4:30, 6, 7:30 p.m.  
Thurs., Jan. 5 G WR at High Plains/Columbus, 9:30 a.m. CT  
B WR at Alliance Dual, 6 p.m.  
**G BB (JV-V) vs. Lakota Tech, 5 & 6:30 p.m.**  
Fri., Jan. 6 WR (V) at Douglas, 12 a.m.  
Sat., Jan. 7 G WR at Garden County, tba  
B WR at Douglas, 9 a.m.  
**G-B BB (JV-V) vs. Mitchell, 2, 3, 3:30, 5 p.m.**  
Mon., Jan. 9 GB BB (C) at Scottsbluff, 4, 5:30 p.m.  
**Tues., Jan. 10 G-B BB (JV-V) vs. Hemingford, 4, 4, 5:30 & 7 p.m.**  
Wed., Jan. 11 FFA CDE at WNCC  
**Thurs., Jan. 12 G-B BB (C) vs. Rapid City Stevens, 4, 5:30 p.m.**  
**BBB 7th vs. Gering, 4 p.m.;**  
**BBB 8th at Gering 4 p.m.**

(Continued on Page 8)

Reliable

Painting LLC

SINCE 1997

CHADRON NEBRASKA INTERIOR & EXTERIOR

Gary Caparoon

308-432-4456      308-430-2045

Careful & Professional - Insured - Free Estimates and References

Wahlstrom  
Ford, Inc.

"The Value Store"

A.J. Huffman  
Waymann Wild  
Cesar Barraza

E. Hwy. 20  
Chadron  
(308)432-5533

Buettner

CONSTRUCTION

SPECIALIZING IN COMMERCIAL DEVELOPMENT

308-638-7684

Eddie's Cell 308-430-1205 • Brant's Cell 308-430-5197

Email: dirtrocks@gpcom.net • 5596 445 Lane, Hay Springs NE

The  
First  
National  
Bank

of Gordon

Your kind of people, your kind of bank.

134 N MAIN ST  
GORDON, NE 69343  
308-282-0050  
WWW.FNBGORDON.COM

Member  
**FDIC**  
EQUAL HOUSING  
LENDER

# AREA SCHOOL ACTIVITIES

**(Chadron continued from Page 7)**

Fri., Jan. 13 G-B BB (JV-V) at Alliance, 4, 4, 5:30, 7 p.m.  
 G-B WR at Ogallala Dual, 5 p.m.

Sat., Jan. 14 G-B WR at Grand Island NW, 9:30 a.m. CT  
**BBB (7th-8th) vs. Valentine, 11 a.m. - 7th at MS, 8th at HS**

Mon., Jan. 16 G-B BB (C) at Alliance, 5, 6:30 p.m.

**Tues., Jan. 17 BBB (7th) vs. Alliance, 4 p.m.; (8th) at Alliance, 4**

Fri., Jan. 20 G WR at Hemingford Invite, tba

Jan. 20-21 B WR Dual at CSC NPAC, 10 a.m.  
 G-B BB (JV-V) at Gering, 4, 4, 5:30, 7 p.m.

Sat., Jan. 21 G WR at CSC, 9 a.m.  
 G-B BB (JV-V) at Gordon-Rush, 2, 3:30, 5, 6:30

**Tues., Jan. 10 G BB (JV-V) vs. Gordon-Rushville, 5:30 p.m.**

Tues., Jan. 24 G-B BB (C) at Rapid City Stevens, 4, 5:30 p.m.  
**BBB (MS) vs. Hot Springs, 7th 4 p.m., 8th 5:30**

**Thurs., Jan. 26 BBB (7th) at Alliance, 4 p.m.; (8th) home, 4 p.m.**

G-B WR at Custer Triangular, 5 p.m.

Fri., Jan. 27 G WR at Mitchell, tba  
**G-B BB (JV-V) vs. Sidney, 4, 4, 5:30, 7 p.m.**

**Sat., Jan. 28 BBB (MS) at Valentine Tourney, 10 a.m. CT Junior Wrestling at MS**

Wed., Feb. 1 FFA CDE at Gordon High School

**Thurs., Feb. 2 G-B BB (C), vs. Gering, 5, 6:30 p.m.**

Feb. 3-4 G WR Districts, tba

**Fri., Feb. 3 G-B BB (JV-V) vs. Rapid City Christian, 4, 4, 5:30 & 7 p.m.**

Sat., Feb. 4 B WR at Southeast Dual, 9 a.m.  
 G-B BB (J-V) at Valentine, 4, 4, 5:30, 7 CT

Mon., Feb. 6 G-C BB (C) at Gering, tba  
**BBB (7th) vs. Scottsbluff, 4 p.m.;**  
 (8th) at SB, 4

Feb. 7 & 9 G BB (C) at Gering Tourney, tba  
 B BB (C) at Alliance Tourney, tba

**Thurs., Feb. 9 G-B BB (JV-V) vs. Bayard, 4, 4, 5:30, 7 p.m.**

Feb. 10-11 District Wrestling

Fri., Feb. 10 G-B BB (JV-V) at Sidney, 4, 4, 5:30, 7 p.m.

## Hay Springs Hawks

Tues., Jan. 3 G-B BB (V) at Oelrichs, 5 p.m.

Fri., Jan. 6 WR vs. Hemingford, 6:30 p.m.

Sat., Jan. 7 WR (V) at Garden County-Oshkosh, 9 a.m.  
**G-B BB (V) vs. Leyton, 2 p.m.**

**Tues., Jan. 10 G BB (JV-V) vs. Gordon-Rush, 5:30 p.m**

**Thurs., Jan. 12 BBB (JH) vs. Cody-Kilgore, 2 p.m.**  
**G-B BB (V) vs. Cody-Kilgore, 4 p.m.**

Fri., Jan. 13 WR at Bennett Co-Martin, S.D., 9 a.m.

Sat., Jan. 14 BBB (JH) at Hemingford, 10 a.m.  
 G-B BB (V) at Potter-Dix, 1 p.m.

Jan. 16-21 G-B BB (V) PanCo at Morrill, tba

Fri., Jan. 20 WR (V) at Hemingford Tourney, 11 a.m.

Sat., Jan. 21 WR (V) at Chadron, 9 a.m.

Tues., Jan. 24 BBB (JH) at Crawford, 3 p.m.  
**WR (V) Hay Springs Tri, 5:30 p.m.**

**Thurs., Jan. 26 BBB (JH) vs. Sioux County, 3 p.m.**  
**G-B BB (V) vs. Sioux County, 5 p.m.**

Fri., Jan. 27 G-B BB (V) at Edgemont, 3 p.m.

Sat., Jan. 28 WR (V) at Ainsworth, 9 a.m.

**Thurs., Feb. 2 BBB (JH) vs. Oelrichs, 4 p.m.**

Fri., Feb. 3 G-B BB (V) at Hyannis, 4 p.m.

Sat., Feb. 4 WR at Southeast Goshen County  
 Tourney, 9 a.m.  
**G-B BB (V) vs. Bennett Co., 2 p.m.**

**Mon., Feb. 6 BBB (JH) vs. Crawford, 3 p.m.**

**Tues., Feb. 7 BBB (JH) vs. St. Agnes, 5 p.m.**  
 G-B BB (V) at Minatare, 5:30 p.m.

Thurs., Feb. 9 G-B BB (V) at Crawford, 4 p.m.

**Fri., Feb. 10 G-B BB (V) vs. Garden Co., 3 p.m.**

## CULTIVATING RELATIONSHIPS

Homegrown is always better.  
 Homegrown banking means local decision making and a better understanding of what customers need and expect from their banks.

Let's grow together.



CHECKING · SAVINGS · PERSONAL & BUSINESS LOANS  
 CERTIFICATES OF DEPOSIT · MORTGAGES · INSURANCE

231 N. Main  
 638-4416  
 Hay Springs  
 Member FDIC



A relationship you can count on.



**“Like Us”  
on Facebook!**  
Northwest Rural



## Recipes



Do you have a recipe you would like to share with our readers?

Please send to [hiphop@gpcom.net](mailto:hiphop@gpcom.net)

### Buffalo Chicken Dip

- 2 (10 ounce) cans chunk chicken, drained
- ¾ cup hot pepper sauce
- 2 (8 oz.) packages cream cheese, softened
- 1 cup ranch dressing
- 1 ½ cups shredded Cheddar cheese
- 1 bunch celery, cut into 4-inch pieces
- 1 (8 ounce) box chicken-flavored crackers

Heat chicken and hot pepper sauce in a skillet over medium heat until heated through, 3 to 5 minutes. Stir in cream cheese and ranch dressing. Cook and stir until well blended and warm, 3 to 5 minutes.

Mix in 1/2 of the Cheddar cheese, and transfer the mixture to a slow cooker. Sprinkle the remaining cheese over top.

Cover and cook on Low until dip is hot and bubbly, about 35 minutes.

Serve with celery sticks and crackers.

\* \* \* \* \*

### Smoked Salmon Spread

- 1 (8 ounce) package cream cheese, softened
- 6 ounces smoked salmon, chopped
- ¼ cup capers, or to taste
- 2 tablespoons chopped green onion (Optional)
- 1 ½ teaspoons chopped fresh dill
- ¼ cup heavy whipping cream
- 3 dashes Worcestershire sauce
- 3 drops hot pepper sauce
- 1 squeeze fresh lemon juice

Process cream cheese in a food processor to soften completely.

Add smoked salmon, capers, green onion, dill, cream, Worcestershire sauce, hot pepper sauce, and lemon juice. Process the mixture again until creamy and smooth.

\* \* \* \* \*

### Jimmy Dean Sausage Cheese Balls

- 2 (16 ounce) packages Regular Flavor Jimmy Dean Pork Sausage
- 4 cups shredded sharp Cheddar cheese
- 1 ½ cups all-purpose baking mix
- ½ cup finely chopped onion
- ½ cup finely chopped celery
- 2 teaspoons minced garlic (Optional)
- 2 teaspoons black pepper

Preheat the oven to 375 degrees F.

Combine sausage, cheese, baking mix, onion, celery, garlic, and black pepper in a large mixing bowl; stir well until combined. Form into balls about 1-inch in diameter; place on an ungreased baking sheet.

Bake in the preheated oven until golden brown, about 20 minutes. An instant-read thermometer inserted into the center should read at least 160 degrees F. Cool on the pan for 5 minutes before serving with cocktail forks or toothpicks.

### To Cook From Frozen:

Preheat the oven to 375 degrees F; allow frozen sausage balls to thaw on a baking sheet while the oven preheats. Bake in preheated oven until golden brown, about 25 minutes. An instant-read thermometer inserted into the center should read at least 160 degrees F.

**Variation:** For a firmer texture, add 3 cups baking mix and 2 cups shredded cheese.

\* \* \* \* \*

## T&L Grinding

CALL TIM MCCLAREN  
for all your  
hay grinding needs.

**(308) 430-2894**



### Quality Custom Made Hats & Accessories

GARY & JOAN WAUGH

G: 308-532-1700 or J: 308-534-4907

Gordon, Nebraska

"Satisfaction Guaranteed"

netcall.com



## Bits 'n Pieces...

### *I Knew a Place Called Yesterday*

I knew a place called Yesterday  
Where once I used to live.  
Nobody there would turn away  
Their time, they'd always give.

Everyone looked out for you  
As you did the same for them,  
In that place called Yesterday  
I can still remember when

People never had anything much  
What they did have, it was shared.  
They always waved and gave a smile.  
That's how we knew they cared.

We used to call it mucking in,  
That's what it was all about.  
It was easier to help each other  
When all you had was nowt.

Now I live here in the Present,  
In a street of those unknown,  
Whose life is so much easier  
If they keep it close to home.

Yes, I raised in Yesterday  
Where we always had respect  
Here in this place called Present  
I find it suffering from neglect.



## HAY SPRINGS

LUMBER & HARDWARE

Under New Ownership -  
Caleb & Sammy Milne  
**130 N. Main • 308-638-4404**

Complete Builders Supply,  
Sentry Hardware  
Free Estimates



### Your Panhandle Area Bee Keeper

"Proudly Serving the Sheridan County  
Area for Over 20 Years"

## Bees · Honey Pollination

Hay Springs  
**308-282-7535**  
Cell: 719-429-2535





## Hay Springs Chiropractic

**Greg Wheeler, DC**

Now Accepting MEDICARE

**109 N. Main**  
Call Now For Your Appointment  
**308-207-2757**

Open  
Tuesdays &  
Thursdays  
Noon - 5 p.m.

## Northwest Rural

### Public Power District

5613 Hwy. 87 • P.O. Box 249  
Hay Springs, NE 69347

web page: <http://www.nrppd.com>

**OFFICERS**

- President: **Gary Fuchser, Gordon**
- Vice President: **Lee Ahrens, Chadron**
- Secretary: **Christopher Garrett, Chadron**
- Treasurer: **Marcus Sandberg, Hay Springs**
- Asst. Treasurer: **Bruce Troester, Marsland**
- Tri-State Director: **Lucas Bear, Gordon**
- Member: **Lynden Smith, Hay Springs**

---

**Manager:** CHANCE BRISCOE  
Office Manager: Tony Hindman  
Office (308) 638-4445

Consumer/Marketing  
Director . . . . . Les Tlustos  
Publisher/Editor  
Advertising Rep. . . . . Cindy Peters  
Hip-Hop (308) 638-7132





# SCHOLARSHIP PROGRAM APPLICATION MEMBER COOPERATIVE

## Basin Electric Power Cooperative - Member Cooperative Scholarship Program

### Scholarship Submittal Requirements

- The student is responsible for submitting all materials on time. Incomplete applications will not be evaluated.
- 1. Complete this application (*attach additional sheets if necessary*). Your name and address should be on all attachments. Completeness and neatness ensure your application will be evaluated appropriately.
  - 2. Recent academic transcript whether it is from a high school, college, university, or trade school. **CURRENT COLLEGE FRESHMAN** - Judges will screen and require more than one semester or quarter of grades. If this applies to you, submit your high school transcript.
  - 3. Copy of your college entrance examination (*ACT and/or SAT*) scores. (*College Freshman Only*)
  - 4. Essay - What challenges face rural electric cooperatives in the coming years and how do you think challenges should be addressed?
  - 5. Applicant appraisal.
  - 6. Send this application and all supporting documentation to your member cooperative. (*Each member cooperative will be responsible for selecting finalists in these categories*).
    - Cooperative applications **MUST** be sent to the cooperative.

**DEADLINE: Submit Application to NRPPD by Feb. 16, 2023 by 5:30 p.m.**

Member cooperatives' must submit their finalists to Basin Electric Power Cooperative by **March 1<sup>st</sup>**.

All scholarship entries are confidential and will only be viewed by the Basin Electric Power Cooperative or member cooperative selection committee.

### Applicant Information

Applicant Name:		Home Phone:	College Phone:	Last 4 Digits of SSN#:
Permanent Address ( <i>Street/PO Box</i> ):		City:	State:	Zip:
Mother's Name:		Father's Name:		
Student's Parent is:		<input type="checkbox"/> Member Cooperative Employee <input type="checkbox"/> Member Cooperative Consumer		
Cooperative System Name:				
Cooperative Location ( <i>City, State, Zip</i> ):				
High School Name and Address from which you graduate or will be graduating this spring:				
Activities, Community Involvement, Achievements, and/or Honors:				

Sending a resume does not replace any part of this application. If space provided in any section is inadequate, you may continue on additional sheets. Attachments must follow the same format. **DO NOT** repeat information already reported on the application form. Your name, address, and name of this scholarship program should be included on all attachments.

### Work Experience

Describe your work experience (*e.g. food server, babysitting, lawn mowing, and office work*). Indicate dates of employment for each job and approximate number of hours worked each week.

Employer/Position	From (Mo/Yr)	To (Mo/Yr)	Hours per Week

**Goals and Aspirations**

Write a brief summary of your plans as they relate to your educational and career objectives and long-term goals.

---



---



---

**Education**

**High School Seniors** - must include a transcript and complete this section.  
**Students currently or previously enrolled in college or vocational-tech schools** - must include college transcripts of grades. Completion of ACT and/or SAT tests is not necessary.

GPA: \_\_\_\_\_

ACT Scores:  
 English: \_\_\_\_\_ Math: \_\_\_\_\_ Reading: \_\_\_\_\_ Science: \_\_\_\_\_ Comp: \_\_\_\_\_

SAT I Scores:  
 Verbal: \_\_\_\_\_ Math: \_\_\_\_\_

**School**

Name and address of accredited school you plan to attend in the fall of the year:

Name	City	State
<input type="checkbox"/> 4-Yr. College or University	<input type="checkbox"/> 2-Yr. Community or Junior College	<input type="checkbox"/> Vocational-Technical School
What will your class status be this fall? <input type="checkbox"/> Freshman <input type="checkbox"/> Sophomore <input type="checkbox"/> Junior <input type="checkbox"/> Senior		
Major Course of Study:	Minors:	

**Essay Question (Required)**

As part of the application, you are required to compose and submit an essay. The essay should be no more than one page, typed with a font size no smaller than 12 point, and double-spaced on 8 ½ X 11" size paper. Include your name on the top right-hand corner of the essay.

Essay - What challenges face rural electric cooperatives in the coming years and how do you think challenges should be addressed?

(Applicant Signature) \_\_\_\_\_ (Date) \_\_\_\_\_

**Applicant Appraisal (Required)**

**To the applicant:** This section is required and must be completed in the format provided. If incomplete, your application will not be evaluated. The section is to be completed by a high school or college counselor or advisor, an instructor, or a work supervisor who knows you well.

**To the adult appraiser:** You have been asked to provide information in support of this application. Please give immediate and serious attention to the following statements. When complete, please return to the applicant. If you prefer, photocopy this section and return to applicant in a sealed envelope. **A letter of recommendation does not replace this section.**

The applicant's choice of a post-secondary educational program is:	<input type="checkbox"/> Extremely Appropriate	<input type="checkbox"/> Very Appropriate	<input type="checkbox"/> Moderately Appropriate	<input type="checkbox"/> Inappropriate
The applicant's achievements reflect his/her ability:	<input type="checkbox"/> Extremely Well	<input type="checkbox"/> Very Well	<input type="checkbox"/> Moderately Well	<input type="checkbox"/> Not Well
The applicant's ability to set realistic and attainable goals is:	<input type="checkbox"/> Excellent	<input type="checkbox"/> Good	<input type="checkbox"/> Fair	<input type="checkbox"/> Poor
The quality of the applicants commitment to school and/or community is:	<input type="checkbox"/> Excellent	<input type="checkbox"/> Good	<input type="checkbox"/> Fair	<input type="checkbox"/> Poor
The applicant is able to seek, find, and use learning resources:	<input type="checkbox"/> Extremely Well	<input type="checkbox"/> Very Well	<input type="checkbox"/> Moderately Well	<input type="checkbox"/> Not Well
The applicant demonstrates curiosity and initiative:	<input type="checkbox"/> Extremely Well	<input type="checkbox"/> Very Well	<input type="checkbox"/> Moderately Well	<input type="checkbox"/> Not Well
The applicant demonstrates good problem-solving skills, follows through, and completes tasks:	<input type="checkbox"/> Extremely Well	<input type="checkbox"/> Very Well	<input type="checkbox"/> Moderately Well	<input type="checkbox"/> Not Well
The applicant's respect for self and other is:	<input type="checkbox"/> Excellent	<input type="checkbox"/> Good	<input type="checkbox"/> Fair	<input type="checkbox"/> Poor

Comments: \_\_\_\_\_

---

Appraiser's Name:	Title:	Organization:	Phone No.:
(Appraiser Signature) _____			(Date) _____